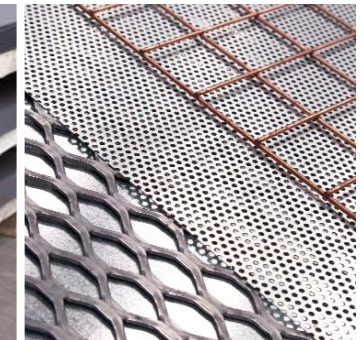


Stockists &  
Traders of  
Quality Steel

**Phoenix**  
S T E E L



[www.phoenixsteel.co.uk](http://www.phoenixsteel.co.uk)

[1]



[2]



[3]



Phoenix Steel has operated in Hebburn, South Tyneside since 1994 offering a 'One Stop' service centre.

### About Phoenix

It is our ongoing aim here at Phoenix Steel to offer an unrivalled service to both our existing and future customers supplying a quality service, on time and at the right price.

Our sales staff are committed to offering a prompt and courteous sales response with a customer focused approach.

### Our Commitment to Quality

We manage our business in accordance with the documented systems and procedures which meet the requirements of BS EN ISO 9001: 2000 best industry practice. Our staff are committed to providing the best possible quality of both product and services.



[4]





Phoenix Steel offer a first class, professional service where our engineering skills are complimented by our understanding of the many diverse applications of finished products.



### Phoenix Facilities

Our 45,000 sq ft unit offers a wide variety of products and services and was set up to supply any steel user who is looking for a quick and reliable service at competitive rates.

Stocking product ranges from decoiled sheet and floorplate to rolled hollow section and universal beams.

We also stock perforated sheet and mesh and are the main North East distributor for The Expanded Metal Company.

In order to expand our range further our 40,000 sq ft Hartlepool facility was added in 2003. Specialising in profiling and plasma cutting as well as punching and decoiling heavier material.

[1]



[2]



[3]



Working closely with our customers, many refer to us as an extension to their works.

### Decoiling

Our three decoiling lines allow us to cover the full range of coil. From 0.5mm up to 2000mm wide 15mm up to 12000mm plates on thinner material we are in a position to offer 'panel flat' sheet suitable for the CNC and Laser industry.

### Shearing

We have a number of guillotines and boast one of the speediest turnarounds of precision cut blanks in the region. We shear all grades of material i.e. Galvanised, Cold Reduced, Floorplate, Hot Rolled and Pickled and Oiled, from as light as 0.5mm and up to 15MM (If Lengths over 4900mm – a slightly longer lead-time may be needed).

### Hi-Def Plasma/Profiling

High definition plasma cutting is considered to be one the most accurate methods available for cutting metal both thick and thin material with great accuracy.

We have three gas profiling machines with a maximum cutting distance of 17M x 3M with a thickness capability of 200mm.

### Bending

We have a large database of customers who require cutting and bending. Quite a large percentage of customers produce stair treads which need to be formed starting from 3mm up to 15mm. We offer a basic bending service.

### Saws

We have a number of automatic saws and mitre saws and can cut precision pieces to very close tolerances. Cutting from 6 to 400mm round and up to 420mm square.

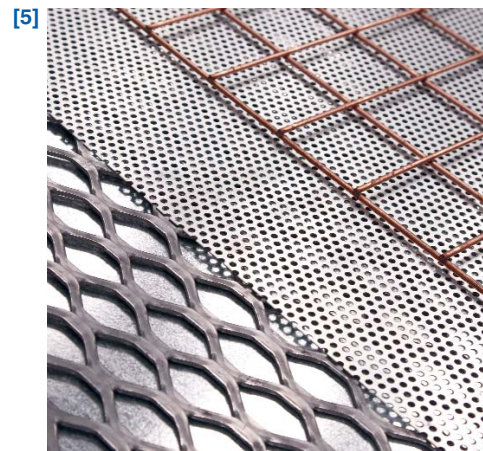
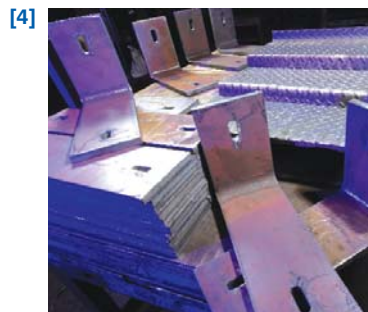
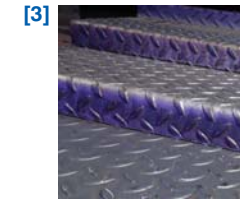
We offer an excellent saw cutting service, from singular one off requirements to contractual requirements where quantities can run into many thousands of cuts.

This can reduce overall costs by reducing your production time and eliminating waste.

### Punching

175 Tonne metalworker, one of the largest in the region.

We have an impressive range of production facilities including; 3 decoiling lines, high definition plasma cutter, wide range of precision guillotines and saws.



### Extensive Sheet and Coil Stock Range

A large percentage of our sheet stock is produced to 'Panel Flat' tolerances suitable for C.N.C. work. Our sheet stock range is one of the most extensive in the region and we endeavour to stock every popular size, gauge and grade available.

### Well Stocked Range of Re-rolled

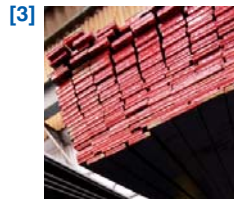
We stock a wide range of the more popular sizes of general steel products such as Angle, Hollow Section, Flats, Rounds etc., allowing us to offer a 'Just in Time' delivery service to manufacturing companies.

Our range of products also includes expanded metal and perforated sheet in mild steel, stainless and aluminium and weld mesh.

### Just in Time

To avoid offering extended processing lead times we also operate a nightshift production allowing us an unrivalled cutting service. Our ability to react to short lead times for cut to size sheets or sections ensures that our database of customers is extensive and covers the full spectrum of steel users. As well as larger steel users we also supply a number of smaller companies where a personal service is essential.





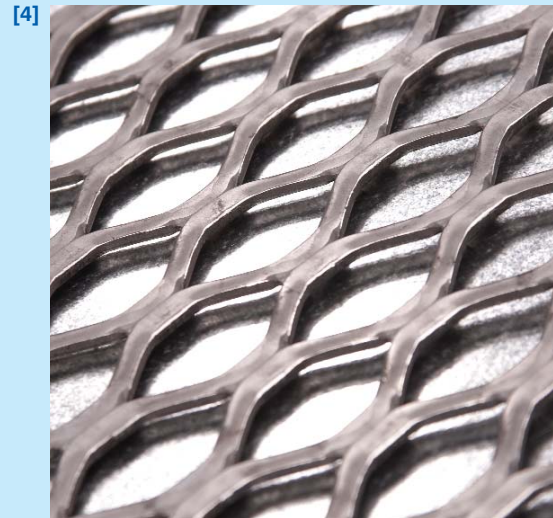
Our units house a wide selection of products for all your steel requirements:

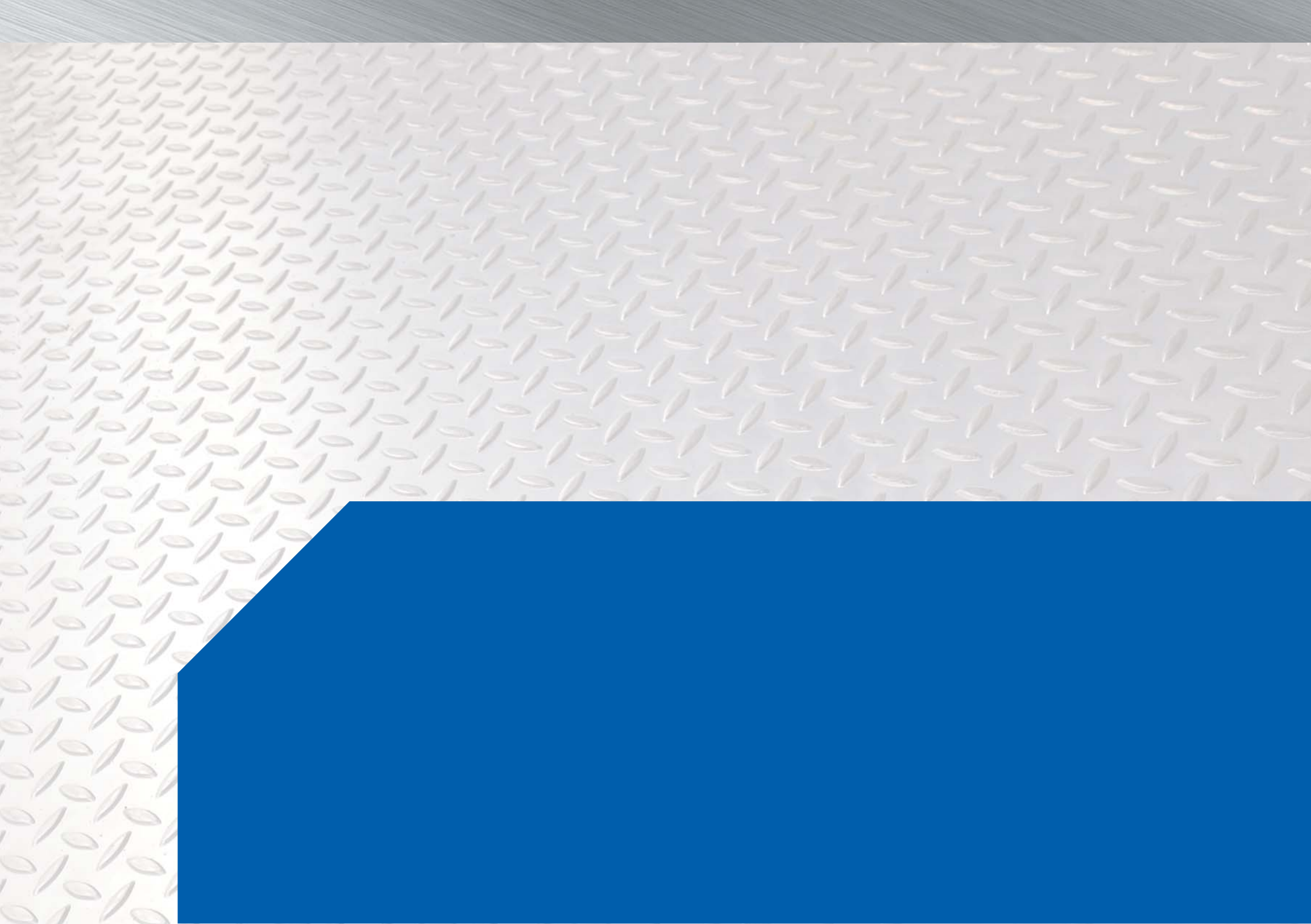
#### Sheet Stock Range info:

- Hot Rolled
- Durbar
- HR Pickle & Oiled
- Cold Reduced
- Galvanised
- Zintec

#### Other Products

- Mesh Panels / Rolls
- Perforated Sheet
- Expanded Products
- Hollow Section
- Beams / Channels
- Columns
- Flats
- Angles
- Squares
- Rounds
- ERW





## For all your steel emergencies

### **Phoenix Steel Limited**

Unit 12 - Ashworth Fraser Estate  
Station Road Hebburn  
Tyne & Wear NE31 1BD

Tel. +44 (0)191 428 1999

Fax. +44 (0)191 428 4999  
Sales Fax. +44 (0)191 428 6999

E. [sales@phoenixsteel.co.uk](mailto:sales@phoenixsteel.co.uk)  
[www.phoenixsteel.co.uk](http://www.phoenixsteel.co.uk)

### **Phoenix Steel Limited**

Skerne Road  
Hartlepool Industrial Estate  
Hartlepool TS24 0RP

Tel. +44 (0)1429 233641  
Fax. +44 (0)1429 862382

E. [sales@phoenixsteel.co.uk](mailto:sales@phoenixsteel.co.uk)  
[www.phoenixsteel.co.uk](http://www.phoenixsteel.co.uk)